

GE12 Lid Support Stay With Safety Catch Release

Upward opening · Top opening

Features

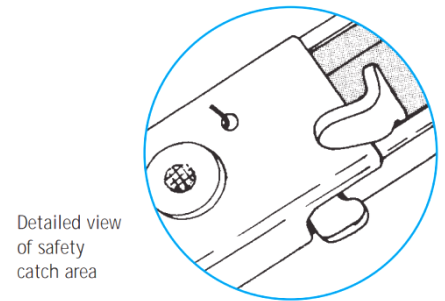
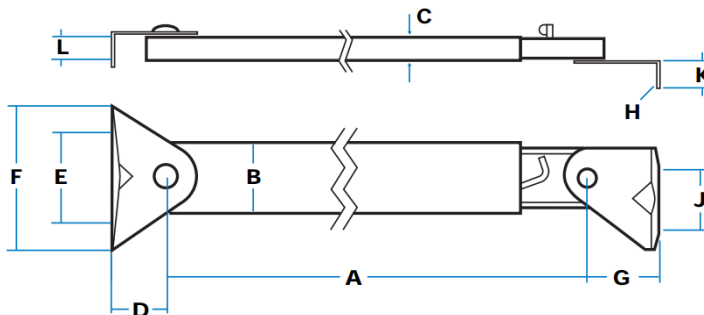
- The standard models illustrated are representative of a family of stays for top-hinged doors and hatches
- The 'safety-catch' design means the stay must be manually released – a useful precaution against vibration or accidental closure
- Stay extends as door is opened, and locks in the extended position. The safety catch must be depressed manually before it will close

Material

- Mild steel, clear zinc-plated

Notes

- Standard brackets shown are **G09514** (top) and **G21194** (bottom)
- Bottom bracket has radiused base and elongated fixing holes for adjustment
- When supplied without brackets, top and bottom sections have mounting holes at 6 mm diameter



Detailed view of safety catch area

Part No.	Type	A		B	C	D	E	F	G	H	J	K	L
		(Closed)	(Extended)										
GE12-G25621	Stay with 2 mounting brackets	285	470	25	12	23	32	57	23	5	19	9	13
GE12-G25621-08	Stay with bottom mounting bracket G03094												
GE12-G35838	Stay without mounting brackets	340	585										
GE12-G35838-01	Stay with bottom mounting bracket G03094												
GE12-G35839	Stay without mounting brackets	210	335										
GE12-G35843	Stay without mounting brackets	285	425										
GE12-G35864	Stay without mounting brackets	340	530										